



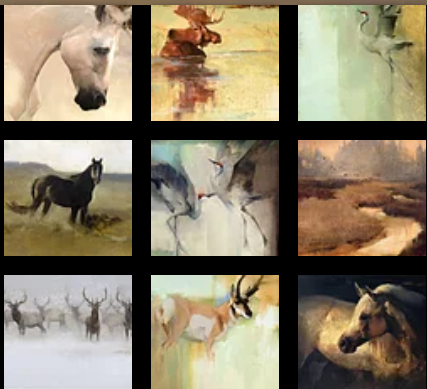
# Featured Artist Kathryn Turner



[Visit Artist's Website](#)

The artwork of Kathryn Mapes Turner has unfolded from the mountain valley of Jackson Hole, Wyoming. Here she was born as the fourth generation to be raised on the [Triangle X Ranch](#) in Grand Teton National Park. Here her consciousness of the natural world began. She grew up riding the trails of the valley, learning wilderness lore and gaining an eye for landscape. The happy synergy of a receptive spirit and a place of magnificent beauty, set the course for her life.

Turner began studying art in her teens from noted local painters. She then left Wyoming to attend the University of Notre Dame, majoring in Studio Arts. She spent an influential semester in Rome, Italy and then studied at the Corcoran School of Art in Washington D.C. Turner now has a Master's degree from the University of Virginia.



Having been passionate about painting since childhood, Turner is now nationally recognized with top honors from the American Impressionist Society and the National Academy of Equine Art. Her work has been exhibited in the National Museum of Wildlife Art, the Charlie Russell Museum and the Leigh Yawkey Woodson Art Museum. Turner has been recognized as Wyoming Best Watercolor Artist in 2001 by the Wyoming Watercolor Society and was included in SouthwestArt Magazine's "Annual Profile of Young Artists with Promising Careers."

Click on image to enlarge

Turner believes that growing up in Grand Teton National Park, a place with such dramatic light and dramatic natural composition, gave her an intimate appreciation for art. "I believe the valley of Jackson Hole evokes expression," says Turner. She now travels all over the world to paint. With watercolors and oil paints, Turner responds with visual contemplations of beauty in hopes of sharing this love of the sublime with others through her work.

Turner also owns and operates [Trio Fine Art Gallery](#) in Jackson Hole, Wyoming with fellow artists [Jennifer L Hoffman](#) and Bill Sawczuk.

